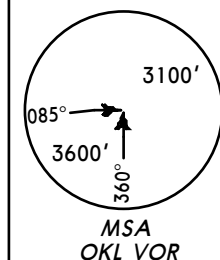


ATIS  
122.15\*RUZYNE  
Radar (APP)  
119.0Apt Elev  
1247'Alt Set: hPa (MM on request)  
Trans level: By ATC Trans alt: 5000'  
At initial contact with RUZYNE Radar state only callsign.

**GOLOP ONE PAPA**  
**(GOLOP 1P) [GOLO1P]**  
**GOLOP TWO ROMEO**  
**(GOLOP 2R) [GOLO2R]**  
**RWYS 12, 30 RNAV ARRIVALS**  
**P-RNAV REQUIRED**



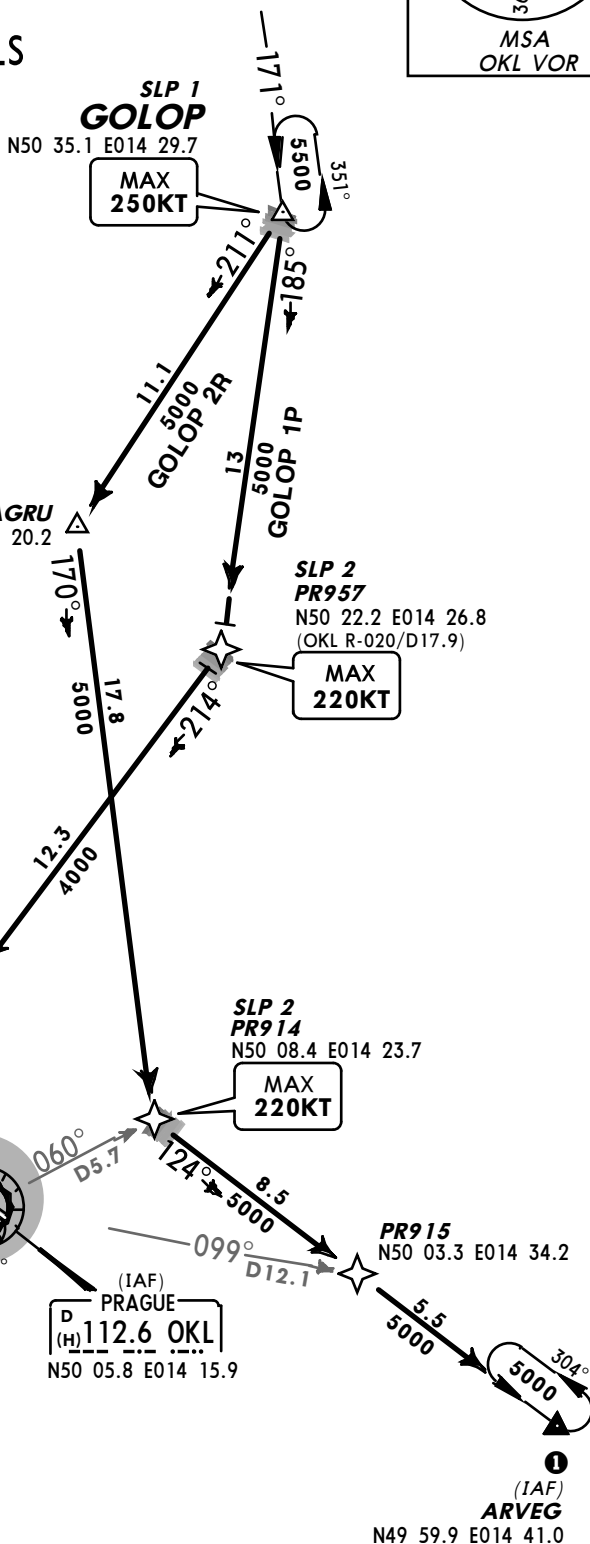
- 1 Unless otherwise instructed continue on 124° heading. RADAR vectoring will be provided.
- 2 Unless otherwise instructed continue on 304° heading. RADAR vectoring will be provided.

Direct distance to RUZYNE Apt from:  
ARVEG 18NM  
EVEMI 12NM



**SPEED RESTRICTION**  
Unless otherwise instructed  
MAX 250 KT at SLP 1  
or if flying off-route at OKL 28 DME.  
MAX 220 KT at SLP 2.  
If unable to comply  
advise ATC immediately.

**SLP** Speed Limit Point



STAR	RWY	ROUTING
GOLOP 1P	12	GOLOP - PR957 - PR958 - EVEMI.
GOLOP 2R	30	GOLOP - BAGRU - PR914 - PR915 - ARVEG.